

Model 108 Bulk Container Depalletizer



LOW LEVEL BULK DEPALLETER

The simplicity of low level operation and the flexibility of low or high level container discharge



**A-B-C PACKAGING
MACHINE CORPORATION**

The bulk depalletizer that gives you more.

Upon viewing this depalletizer in operation, many remark on the harmonious operation and low level design. Yet it takes a closer inspection to detect the details that are essential to achieving superior performance when depalletizing hundred-thousands of containers each day. It's these exclusive features that make the difference in the efficiency of your operation. Look for the layer stabilizing mechanism that squares both the primary and secondary layers before sweep off. Four side container control with control setting front support bar to minimize downed containers. Complete tier sheet containment to eliminate layer shifting. Tier sheet grippers to accommodate varying load weights. And much more.

We include these features as standard equipment on every A-B-C depalletizer.

Because we believe that the performance of your line should be based on the efficiency of your equipment, not how many options your budget allows.

Our customer support includes technical service, spare parts, operator training, and our commitment to customer satisfaction ... making A-B-C bulk depalletizers the reliable choice for all your bottle and container handling requirements.

Features to ensure reliable performance...

Only A-B-C builds these production-proven features into every standard machine:

Features to ensure optimum container stability

- **Layer stabilizing mechanism** squares the primary and secondary layers before sweep-off
- **Four side container control** with control setting front support bar during sweep-off
- **Four side tier sheet containment** with friction plates and tier sheet grippers to eliminate tier sheet movement and downed containers
- **Variable frequency motor drives** provide soft start, soft stop operation

TOP FEATURES TO ENSURE OPTIMUM CONTAINER STABILITY

As the primary layer is swept from the pallet, the secondary layer is held on all four sides by pneumatically controlled steel friction plates. Below, the tier sheet is held by grippers from the rear, holding the sheet securely during sweep-off.

The sweep carriage has four containment devices: two adjustable side plates, a rear sweep bar and a front support bar. The sweep and

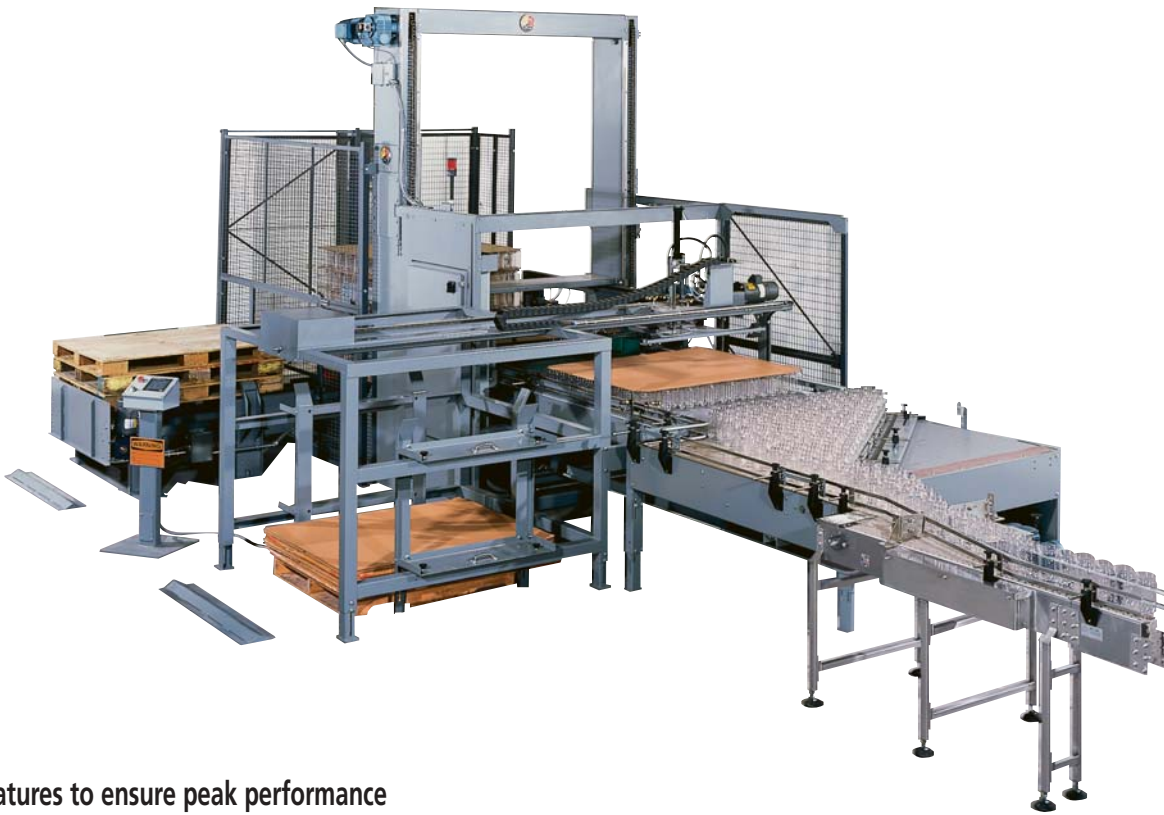
support bars are operated by independent, frequency-controlled motors to ensure bottle stability. During sweep off, friction between the container bases and the supporting tier sheet tends to reposition the layer toward the rear sweep bar. The adjustable support bar allows this gap to be eliminated, to ensure complete containment throughout transfer.



Primary and secondary layers are squared before sweep-off.



Friction plates plus tier sheet grippers stabilize the secondary layer during sweep off.



Features to ensure peak performance

- **Diagnostic control center** with color touchscreen display
- **Ability to handle glass, metal and plastic containers interchangeably** - no options required
- **110" maximum load height capability**

FLEXIBLE TO CHANGE WITH YOUR REQUIREMENTS

Glass, metal, plastic and composite containers run interchangeably, with no special options or change parts required. This exclusive feature gives you flexibility to adapt for varying market requirements and satisfy seasonal production demands.

CHOOSE YOUR LEVEL OF AUTOMATION

Optional features include:

- Picture frame, slipsheet removal and stacking
- Empty pallet removal/stacking - handles all styles of pallets, 1,500 lb. capacity
- Auxiliary full pallet conveyor - automatically feeds loaded pallets for depalletizing
- Roller style or chain style pallet conveyor
- Container single filer
- Lean detector to identify severely shifted palletloads

QUALITY PRODUCTION FEATURES

Efficient design and quality production ensure high volume, reliable operation:

- Channel steel frame with welded and bolted construction eliminates vibration, ensuring long machine life.
- 1-1/4" solid shafts on pallet conveyor and sweep bar drive units
- 1-1/2" shaft on elevator carriage drive
- Heavy duty industrial roller chain carries elevator table
- Precision chain and sprocket sweep mechanism provides long-term reliability, proven in hundreds of installations worldwide.
- The elevator table is guided by 8-point location roller bearings and is counterweighted for smooth vertical operation.



Elimination of "sweep off gap" keeps bottles stable from pallet to discharge.



Picture frame and slipsheet removal and stacking are automatic.



Empty pallet stacker handles all types of pallets and ensures easy load removal by lift truck.

Standard features include:

- Mechanical primary and secondary layer squaring before sweep-off
- Electro-mechanical dual chain-driven sweep bar
- Automatic container height detector
- Four side containment devices on sweep carriage: adjustable side plates, rear sweep bar and front stabilizer bar
- Stainless steel, reinforced transfer table with tapered stripper plate
- Counterweighted elevator table
- Adjustable guide rails on elevator table
- Low maintenance design
- Color touchscreen control panel
- Programmable logic control
- IEC motor starters
- Quick disconnect non-contact sensing devices with LED indicators
- Variable frequency motor drives
- Full machine guarding

Optional features:

- Picture frame and slipsheet remover/ stacker
- Empty pallet stacker
- Powered full pallet feed

ECONOMICAL FLOOR LEVEL OPERATION

Floor level operation keeps your costs down. Installation requires no additional overhead platforms or equipment. Maintenance is simplified with clean, open construction and easy to reach access points. Your plant personnel are able to monitor machine operation while performing other tasks.

MADE IN AMERICA

Over ninety percent of the machine components in A-B-C machines are crafted in our own manufacturing plant. It is our tradition of quality and craftsmanship that has made A-B-C a leader in packaging machinery manufacture since 1940.

Litho in U.S.A.

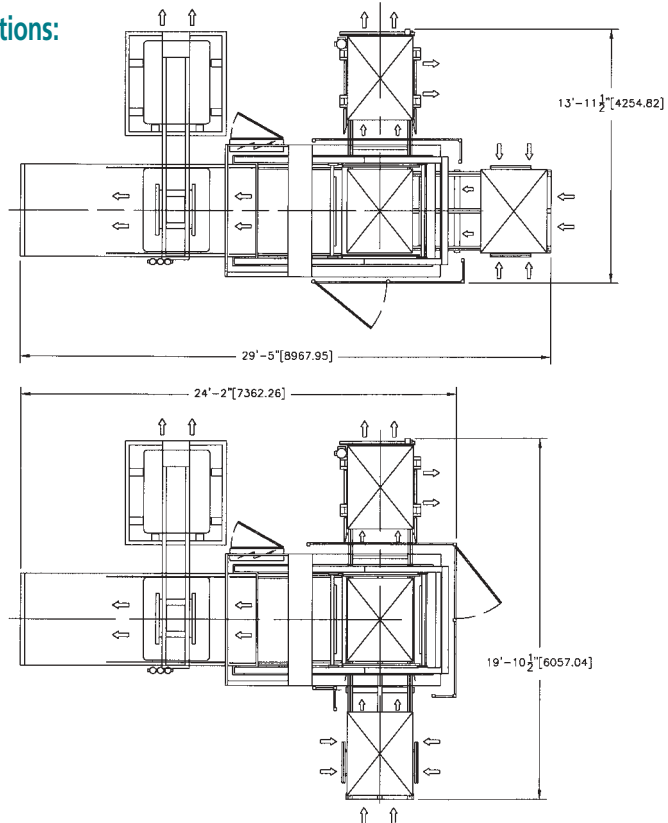
C-138-12/01



Here's how it works:

1. Full pallet load, with film wrap and bands removed, is fed by powered conveyor into the depalletizing station.
2. The bottle elevator table moves to the top tier of the pallet load.
3. The lower tier sheet is secured. The top layer, top tier sheet and frame are swept onto the elevator table.
4. The elevator table moves to the level of the discharge table. The containers are swept onto the discharge table.
5. The discharge table is controlled to pause momentarily while the tier sheet is removed and stacked in a hopper.
6. Containers are channeled off the discharge table.

Specifications:



All information in this brochure was current at time of printing, however, in the continuing effort to improve the quality and construction of A-B-C machines, we reserve the right to make changes without notice. Guards may be opened or removed for photos shown.



**A-B-C PACKAGING
MACHINE CORPORATION**

811 Live Oak Street, Tarpon Springs, FL 34689-4199 USA
Phone 727-937-5144 • Fax 727-938-1239
Visit our web site www.abcpackaging.com

