

Model 49 Decaser

Automatic unloader / single filer for glass or plastic containers



Here's a compact machine designed for high speed unloading of reshipper cases that assures a continuous supply of empty bottles to your production line. The Model 49 eliminates the repetitive tasks associated with manual decasing to maximize employee productivity. The Model 49 offers quick, no tools changeover with no

change parts for all but the most extreme case or bottle size changes. Adjustments can be completed in minutes using simple hand cranks for height and width dimensions, with locking slides for bottle guiderails. This versatile machine gives you the flexibility to meet your needs now and in the future.



**A-B-C PACKAGING
MACHINE CORPORATION**

Model 49 Decaser

Automatic unloader / single filer for glass or plastic containers



Automatic, in-line operation

The Model 49 eliminates the repetitive tasks associated with manual decasing, maximizing employee productivity. Cases are fed back-to-back through a vertical belt infeed which provides gentle case handling. Major flaps are plowed open and minor flaps open by the bottle weight allowing the bottles to discharge onto the impact-absorbing belt. Bottles are single filed quickly with minimal bottle contact.



Gentle handling

As the bottles discharge onto impact-absorbing rubber belt, they remain spaced and separate, in their pack pattern until they reach single filing. The single filing section is designed to separate the bottles with minimum bottle-to-bottle contact.



Line layout flexibility

The Model 49 has a compact design, providing maximum flexibility for line layouts. Right hand or left hand bottle discharge is available. Empty cases are uprighted and discharged onto a floor level conveyor, or the optional 180° case turnover offers an additional choice in line layout. *(shown in photo at left)*



Versatile for many container styles

The Model 49 automatically decases and single files glass or plastic bottles from RSC, HSC, or RSC-Tablock cases. Changeover is quick and easy...most case changes are completed with simple hand crank adjustments.

- **COMPACT DESIGN**
- **QUICK CHANGEOVER**
- **VERSATILE**
- **ENSURE CONTAINER INTEGRITY**

Quality features make a better machine:

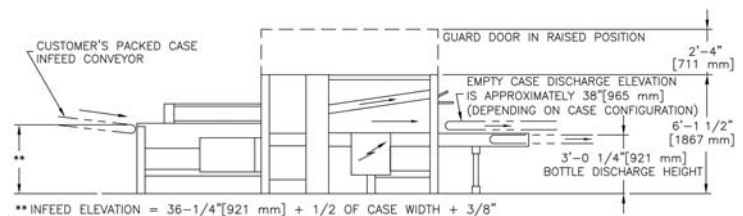
- Steel frame construction
- Vertical belt infeed for gentle case handling
- Quick changeover with rapid adjust hand cranks for new case sizes
- Variable speed drive to meet production needs
- Locking side bar adjustments
- Optional repeatable position indicators

Specifications:

Case range: RSC, HSC or RSC-Tablock cases

Case size:	L	W	H
Minimum	9"	8"	5"
Maximum	26"	15"	15"

Electrical: Primary 220, 440v, 60hz, 3ph
Machine dimensions: 19' 10" L x 5' 2" W x 6' 2"
Weight: 3,590 lbs.;
4,020 lbs. w/180° case turnover
Speed: Up to 70 cases / minute



All information in this brochure was current at time of printing, however, in the continuing effort to improve the quality and construction of A-B-C equipment, we reserve the right to make changes without notice.



A-B-C PACKAGING MACHINE CORPORATION

Litho in U.S.A.
C-143-7/04

811 Live Oak St., Tarpon Springs, FL 34689-4199 USA • Ph 727-937-5144 • Fax 727-938-1239 • www.abcpackaging.com

